



Bundesamt
für Migration
und Flüchtlinge

THE CANADIAN POINT SYSTEM - an Example for Germany Discussions and Barriers

by

Dr. Hans Dietrich von Loeffelholz

**Chief Economist and Head of Research on the
Economics of Migration and Integration
Federal Office for Migration and Refugees
Nuremberg, Germany**

**at the METROPOLIS 2008-Workshop 23-28:
„Canada, Immigration Model for
Germany?“**

**on October 28, 2008,
Bonn, Germany, BMZ**



1. Introduction

- **Shortage of skilled workers in Germany**
- **Global competition for the *best and brightest***
- **Demographic concerns**
- **Experience of the past years since 2000 with managing the skilled migration into Germany**
- **Most recent discussion on better managing the worker's migration – even in the State Council – free movement in the EU with 470 Mio. inhabitants)**
- **Coordination or substitution: a (new) supply driven point-system without and with job-offers and the given demand-driven national entrance regimes with or without labour market tests**
- **Supranational Level: Blue Card-proposal of the European Commission**



2. Well-known advantages

- **Announcement and signalling effect in the global competition for the *best and the brightest***
- **Good prospects of integration**
- **Demographic requirements**
- **Flexible reaction to requirements of labour markets and job situation in the business cycle..**
- **...resulting in educational and training prerequisites of the taking up the job**
- **So flexible adjustment of regulations without long-lasting political haggling possible**



3. Barriers:

A) No tradition and defensiveness

- **Even though Germany since a half century has been an immigration country, it seems to be difficult for the wide majority to accept this fact**
- **The general recruitment ban (1973) is still ingrained in the minds of the electorate**



B) Little interest abroad due to the difficult German language

- **Skilled workers prefer to move to English speaking countries like USA, Canada and Australia, where they can use the already learned language or it is comparatively easier to learn it**
- **Natural language disadvantage**



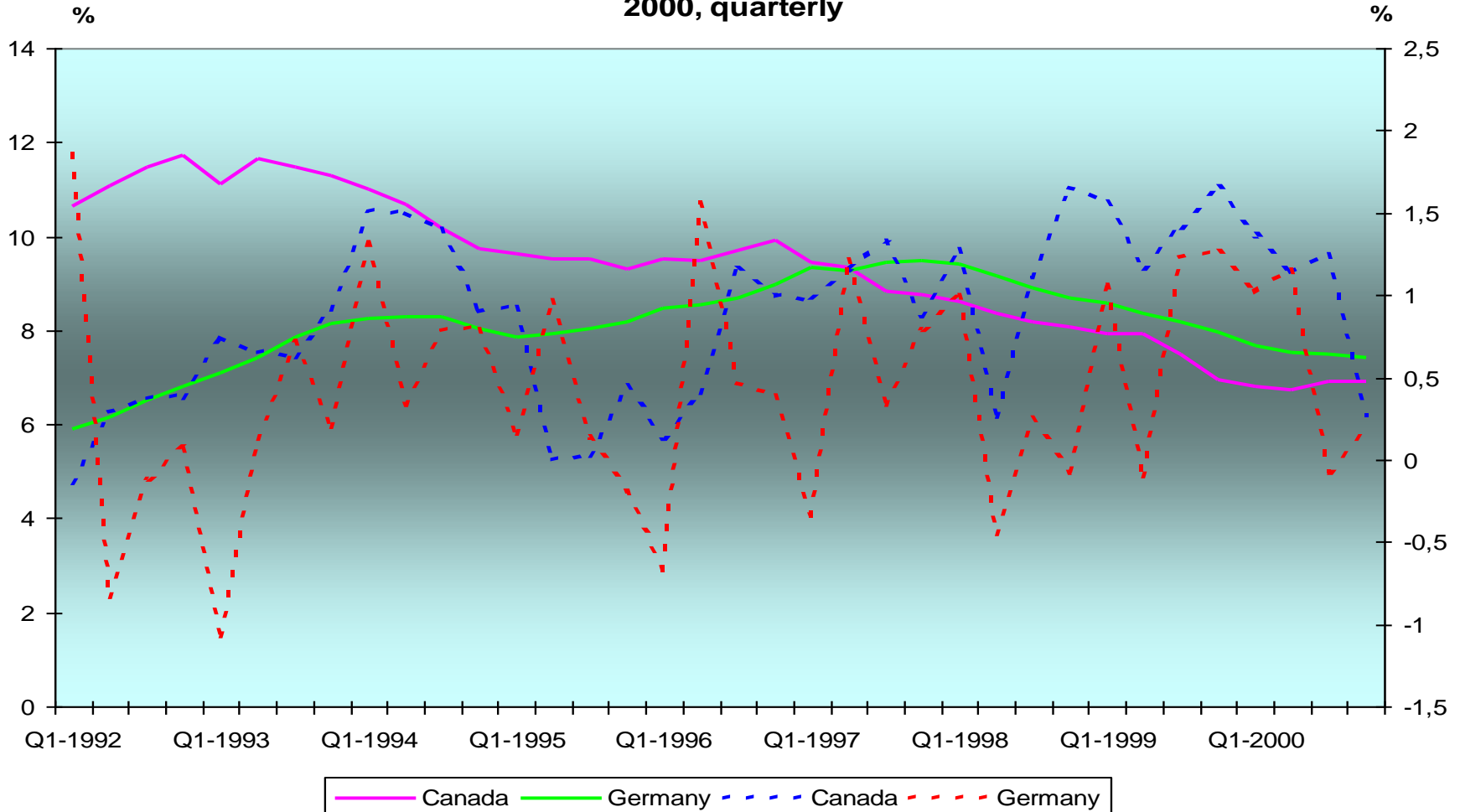
C) Demo-Economic Conditions

- 1. Demographics on the decrease**
- 2. Highly regulated labour market**
- 3. Unemployment much higher by international standards in Germany vs. Canada since 1997**
- 4. Economic growth lags behind Canada**
- 5. Generosity of the Social System?**



Different Economic Growth and Labour Market Situation Germany-Canada

GDP-growth and standardised unemployment rate in Germany and Canada 1992-2000, quarterly



D) Flaws of the System in Canada itself

- 1. Mismatches on the labour markets between supply and demand**
- 2. Brain Waste**
- 3. In Canada via point-system admitted migrants move to USA**
- 4. The States reap the benefits**



Bundesamt
für Migration
und Flüchtlinge

Contact

Federal Office for Migration and Refugees
90343 Nürnberg

Internet: www.bamf.de

Thank you!