

# Irregular migrants: local integration or return?

Metropolis  
28 October 2008



- The position of irregular migrants in the Netherlands: *Henriëke Wubs*
- The position of irregular migrants in Spain: *Blanca Garces Mascarenas*
- Promoting voluntary return of failed asylum seekers in Norway: *Jan-Paul Brekke*
- Promoting voluntary return of irregular migrants by IOM: *Laura Carpier*
- Comments from the US: *Mark Schlakman*

Chair: *Mariska Kromhout*

WODC



## Irregular migrants:

People living in a country other than their country of origin, without a valid residence permit

## Terminology:

Irregular / undocumented



## Types of irregular migration:

- crossing borders without consent of authorities
- crossing borders using false documents
- overstaying visa / residence permit
- staying on after rejection of asylum claim

Henriëke Wubs  
Research and Documentation Centre  
Ministry of Justice  
The Hague

WODC

# Irregular Migrants in the Netherlands

2008-10-28

## Overview

- Estimates
- Legal position
- Social position

Introduction

Overview

Estimates

Legal position

Social Position

Conclusion



# Estimates

WODC

Van der Heijden: April 2005 - April 2006

	Estimate	95% confidence interval
European	88.116	62.320 < > 113.912
Non-European	40.791	12.000 < > 70.000

Introduction

Overview

Estimates

Legal position

Social Position

Conclusion

# Estimates

**Age:** ♂ ± 85% ♀ ± 15%

**Gender:** 80% younger than 40

**Nationality:** EU: Bulgaria, Romania  
Other: China, African countries,  
Turkey, Morocco

## Decrease of number likely

- European enlargements
- Recent regularisation, ca. 27.500 asylum seekers

Introduction

Overview

Estimates

Legal position

Social Position

Conclusion



## Legal position

## Exclusion policy

- Labour market (*Aliens Employment Act 1991*)
- Social provisions (*Linking Act 1998*)

## Exceptions

- Health care
- Education & youth care

Introduction

Overview

Estimates

Legal position

Social Position

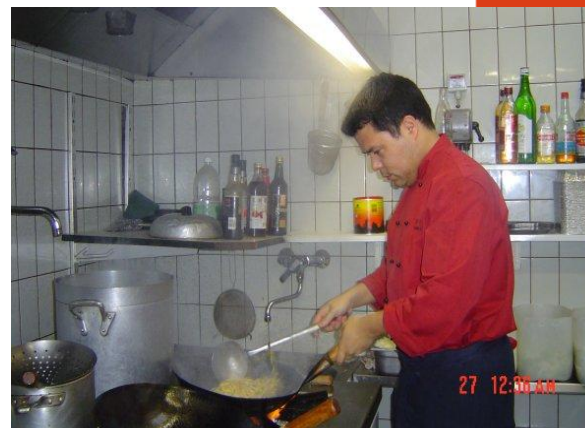
Conclusion



# Social position

## Employment

- 65.000 – 91.000
- Major branches
  - hotel/catering
  - construction
  - agriculture / horticulture
  - temporary employment
- working conditions: poor



WODC

Introduction

Overview

Estimates

Legal position

Social Position

Conclusion

# Social position

## Accommodation

- ca. 40% live in big cities
- with family / friends
- subletting
- rent in private sector

WODC

Introduction

Overview

Estimates

Legal position

Social Position

Conclusion



## Conclusion

### Legal position

- Except health care & education, no rights

### Social position

- More pressure on exploiters
- Social position vulnerable

Introduction

Overview

Estimates

Legal position

Social Position

Conclusion

